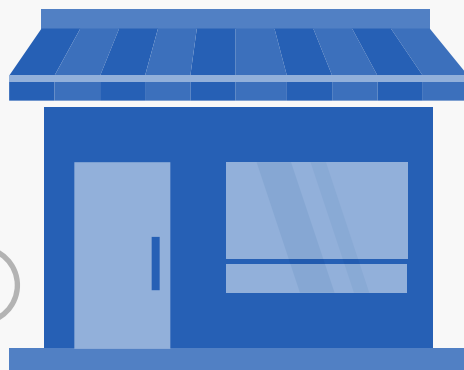
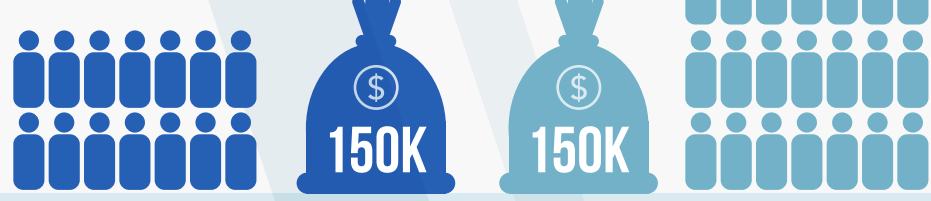


FRAUD IN SMALL BUSINESS

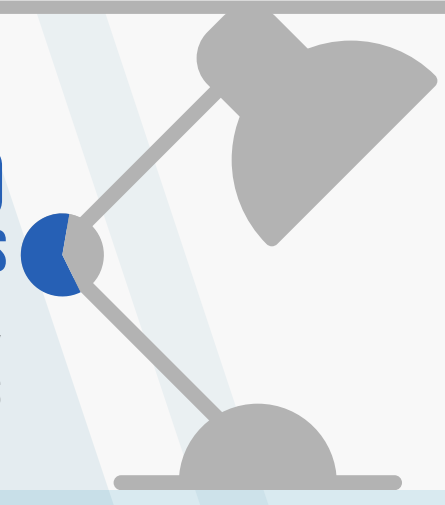


30%
OF FRAUD CASES
OCCURRED IN
SMALL BUSINESSES
(THOSE WITH FEWER THAN 100 EMPLOYEES)

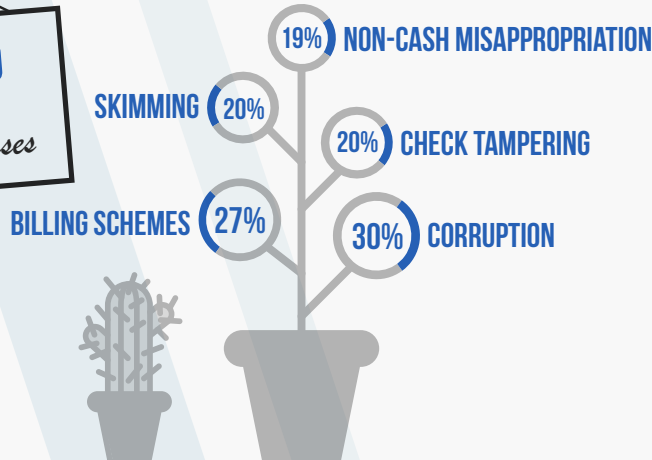
SMALL BUSINESSES SUFFERED THE SAME MEDIAN FRAUD LOSS AS ORGANIZATIONS WITH 10,000+ EMPLOYEES



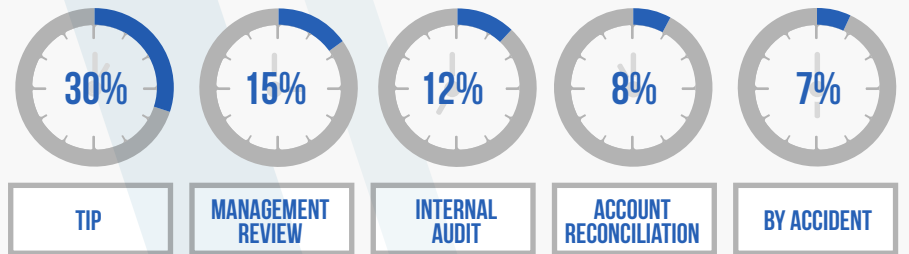
60%
OF SMALL-BUSINESS
FRAUD VICTIMS
DIDN'T RECOVER ANY
OF THEIR LOSSES



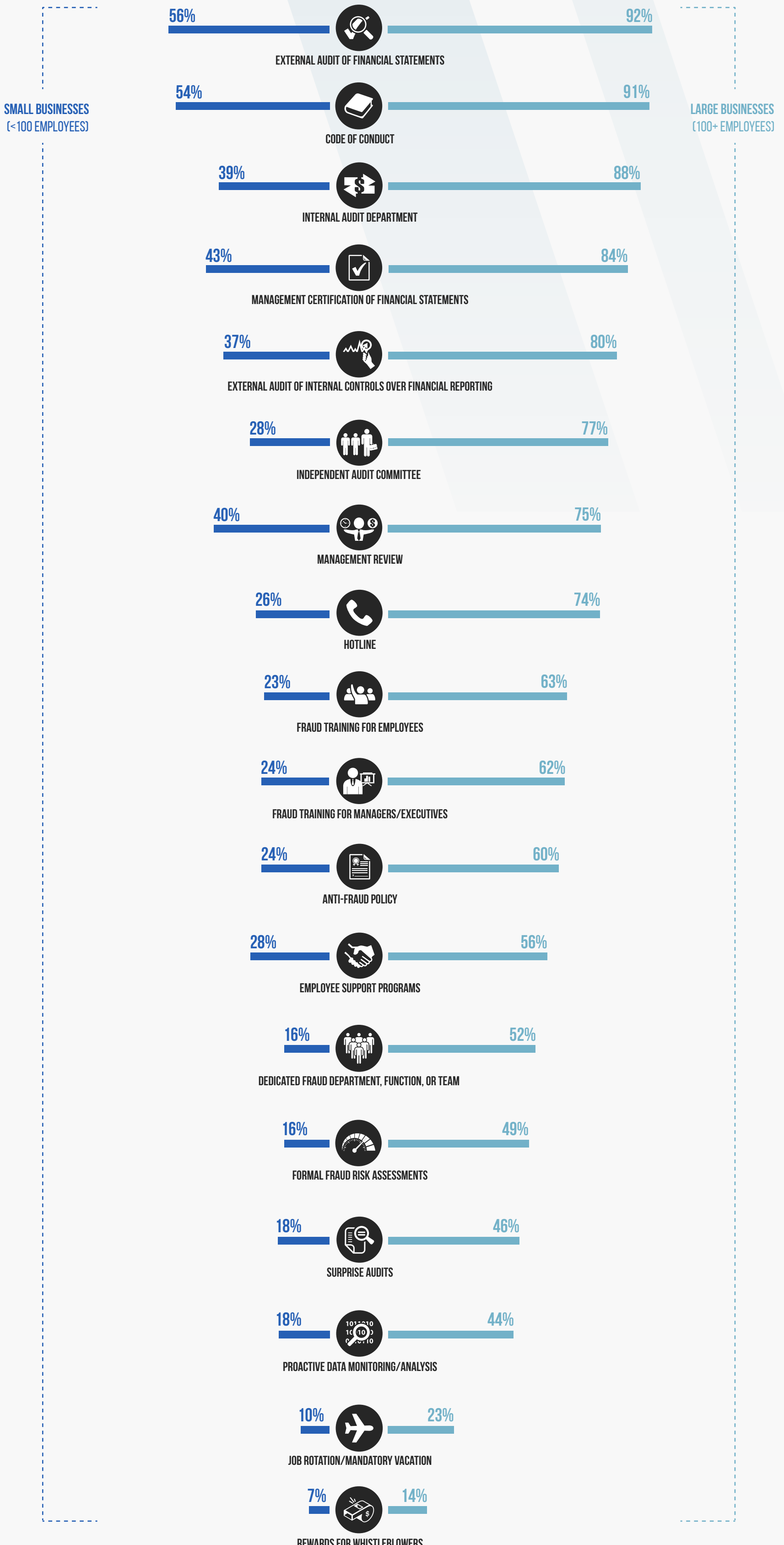
TOP FRAUD RISKS
for
small businesses



HOW SMALL BUSINESSES DETECT FRAUD



SMALL BUSINESSES HAVE FEWER ANTI-FRAUD CONTROLS IN PLACE THAN LARGE ORGANIZATIONS, MAKING THEM ESPECIALLY VULNERABLE TO FRAUD



Data from the ACFE's 2016 Global Fraud Study, Report to the Nations on Occupational Fraud and Abuse.

Download the full report and view interactive graphs at ACFE.com/RTTN.



*Together, Reducing
Fraud Worldwide*